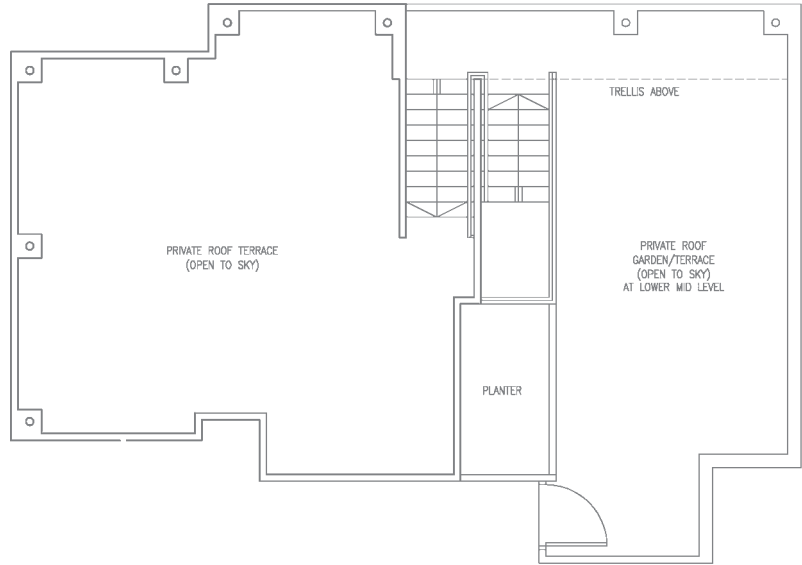


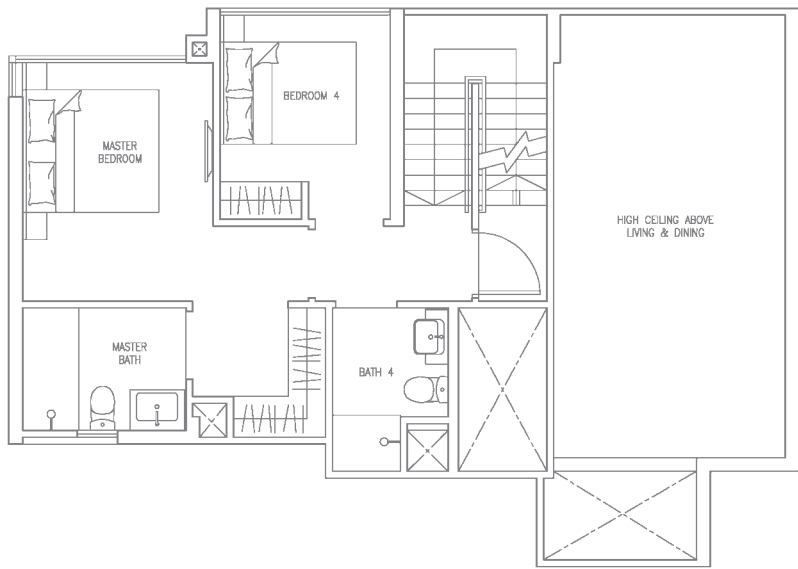
**TYPE C2PH (4-BEDROOM) MIRRORED**

Unit #13-02

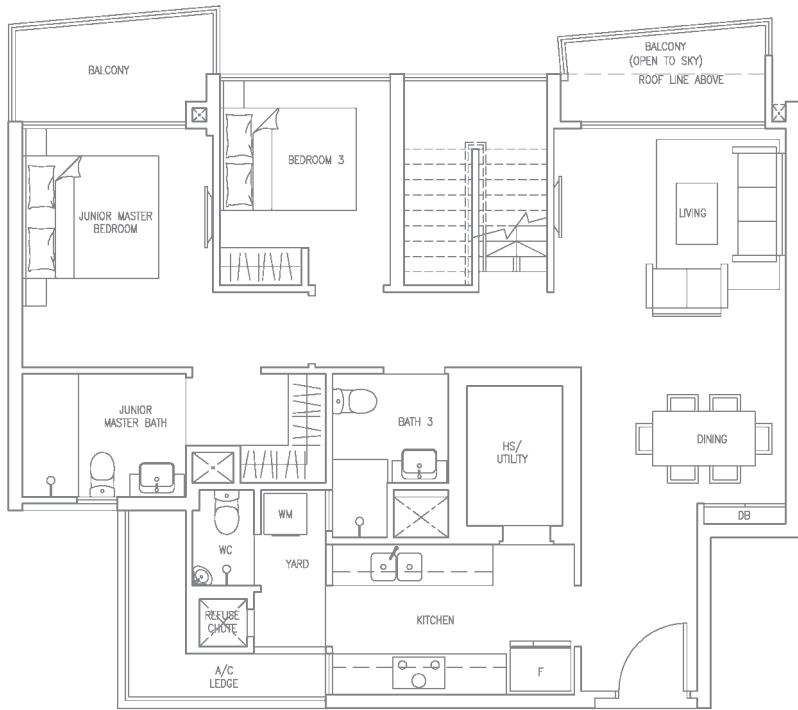
Area 2713 sqft / 252 sqm



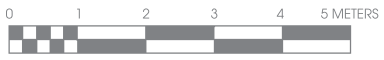
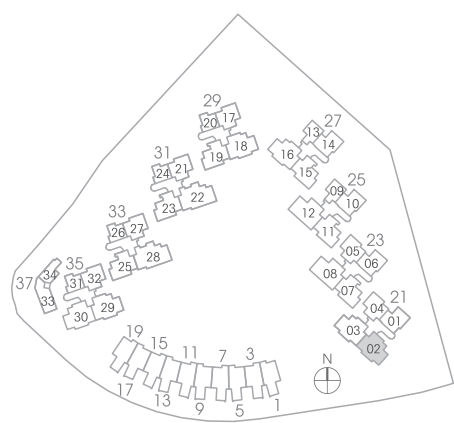
ROOF LEVEL



UPPER LEVEL



LOWER LEVEL



The plans are for general guidance only and subject to changes as may be approved by the relevant authority. The floor plans are approximate measurements and subject to final survey.

Building Plan no. : A1754-00001-2012-BP01 approved on 25 July 2012